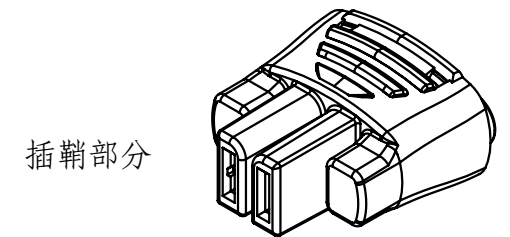
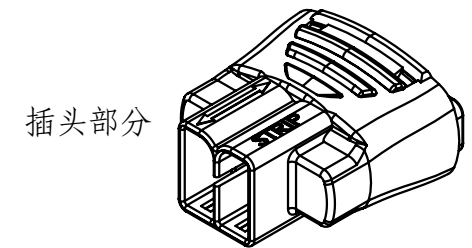
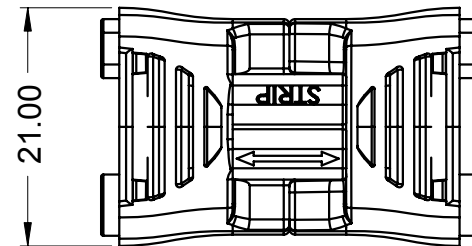
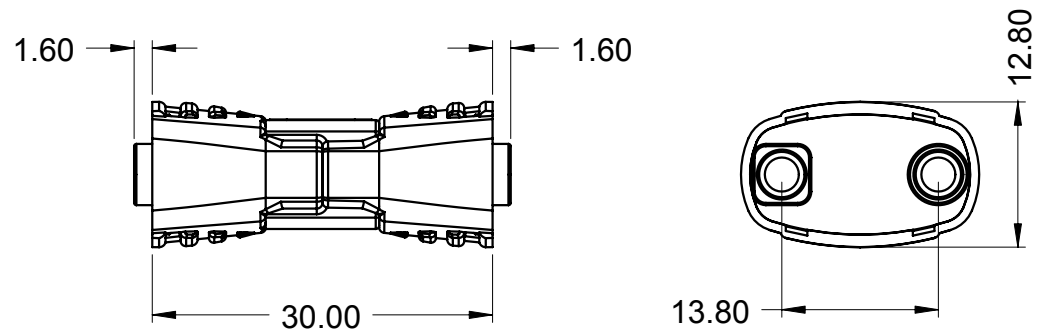
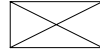
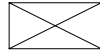
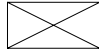
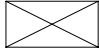


认证	 
电气性能	
参考标准	UL
电压 (V)	300\600
电流 (A)	3\0.6
美规线径 (AWG)	12-18实心线 12-14绞合线 12-18浸锡软线
材料	
塑料件	聚酰胺66 UL94V-0等级
五金件	合金铜(电镀)
环境温度	T105℃



型号选择: 822-  /   

底部印字

颜色

极数

包装  
标记

**TEILBAR**



江门市汇聪电器厂有限公司

822系列插拔式连接器端子